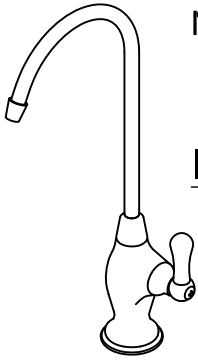


# MT600-NL (WAS MT600-2)



NO LEAD\* POINT OF USE DRINKING WATER FAUCET

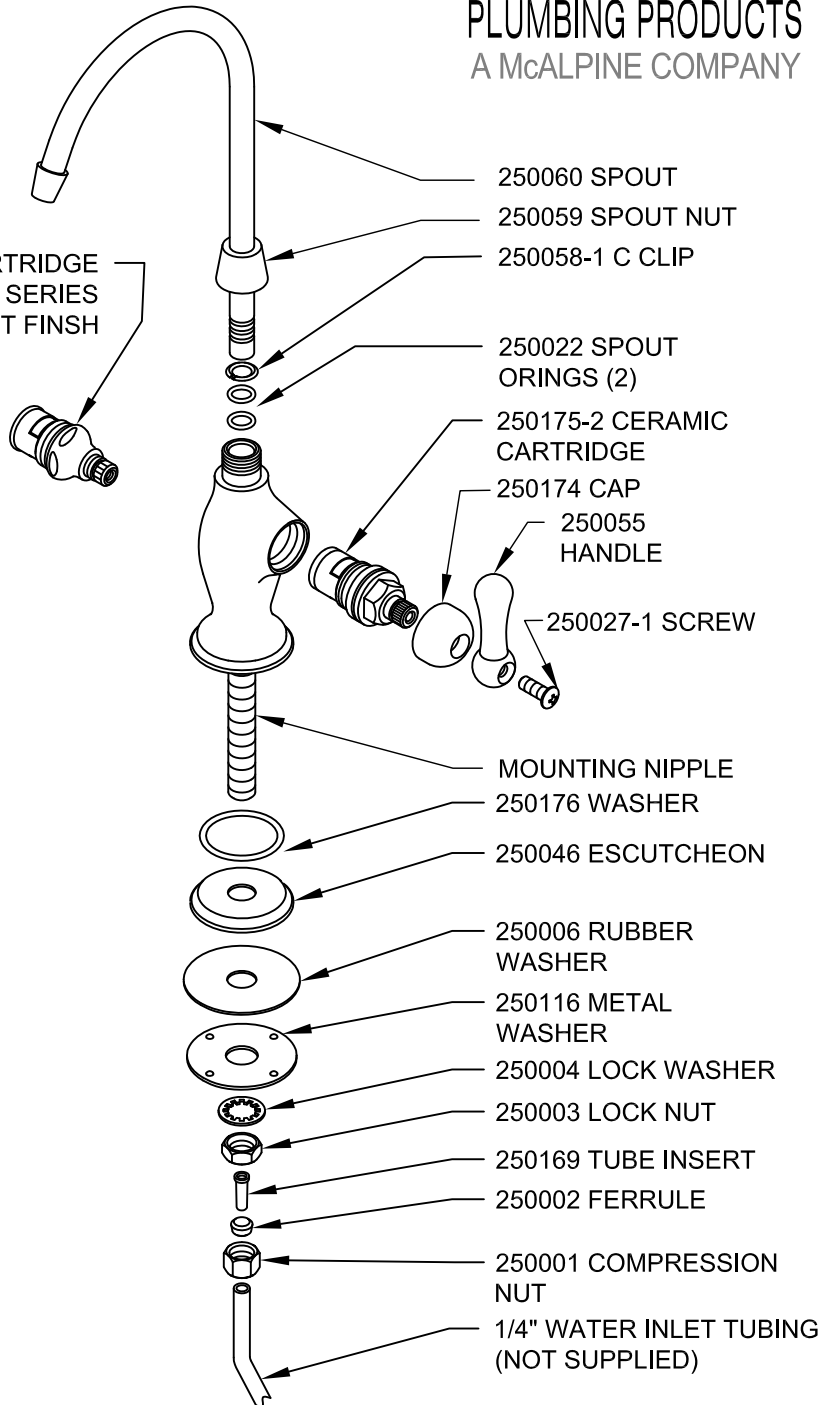
## INSTALLATION SHEET



# 250175-1 CARTRIDGE FOR MT600-2 SERIES MATCHES FAUCET FINSH

### INSTALLATION INSTRUCTIONS

1. PLACE 250176 WASHER INTO BOTTOM OF FAUCET.
2. SLIDE 250046 ESCUTCHEON OVER MOUNTING NIPPLE UP TO BOTTOM OF BODY.
3. PLACE FAUCET MOUNTING NIPPLE INTO 1/2" MINIMUM, 1 3/8" MAXIMUM HOLE IN SINK OR DECK .
4. SLIDE 250006 RUBBER WASHER , 250116 METAL WASHER WITH DIMPLES FACING UP AND 250004 LOCK WASHER ONTO MOUNTING NIPPLE THEN HAND TIGHTEN WITH 250003 LOCK NUT.
5. POSITION FAUCET IN THE CORRECT DIRECTION AND TIGHTEN LOCK NUT.
6. SLIDE 250001 COMPRESSION NUT OVER WATER INLET TUBE. SLIDE 250002 FERRULE ONTO WATER INLET TUBE. IF PLASTIC TUBING IS BEING USED PUSH 250169 TUBE INSERT INTO TUBE.
7. TIGHTEN 250001 COMPRESSION NUT. DO NOT OVER TIGHTEN.
8. MAKE SURE HANDLE IS POINTING UP IN THE CLOSED POSITION, TURN ON WATER SUPPLY AND CHECK FOR LEAKS.
9. SPOUT ORINGS, CLIP AND CERAMIC CARTRIDGE PARTS ARE SHOWN SHOULD SERVICE BE REQUIRED.



### FINISH CARE & MAINTENANCE

NEVER USE ANY HARSH ALKALI, ACID BASED DETERGENTS OR CLEANERS SUCH AS SOFT SCRUB®, SCRUBBING BUBBLES® OR COMET® TO CLEAN. DO NOT USE BRILLO® OR SCOTCH BRITE® PADS. THESE WILL ALL HARM THE FINISH. TO CLEAN, USE ONLY A DAMP SOFT CLOTH AND WIPE USING A SOFT CLOTH. STANDARD WINDEX® CAN ALSO BE USED SPARINGLY. IT IS NOT NECESSARY TO WIPE HARD TO REMOVE SPOTS. TO MAINTAIN THE FINISH, WIPE WITH A SOFT DRY CLOTH AFTER USE. AN OCCASIONAL COAT OF PURE CARNUBA WAX WITHOUT CLEANERS WILL HELP PROTECT THE FINISH.

### WARRANTY

ONE YEAR WARRANTY ON PLATED FINISHES, 90 DAY WARRANTY ON ORB, EB, MHB, TB AND WCP AND LIFETIME ON PVD PROVIDED PROPER CARE HAS BEEN USED. ONE YEAR WARRANTY ON ALL PARTS. APPLIES TO ORIGINAL PURCHASER . CLAIMS REQUIRE PROOF OF PURCHASE.